

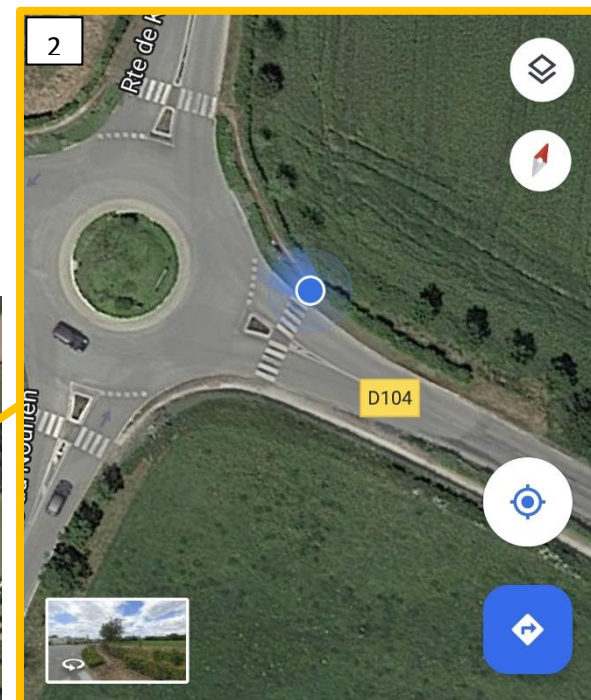
**Implantation de l'avis d'enquête publique :**

1 : A l'entrée Est de la commune

2 : A l'entrée Sud de la commune



47.666990, -2.580846

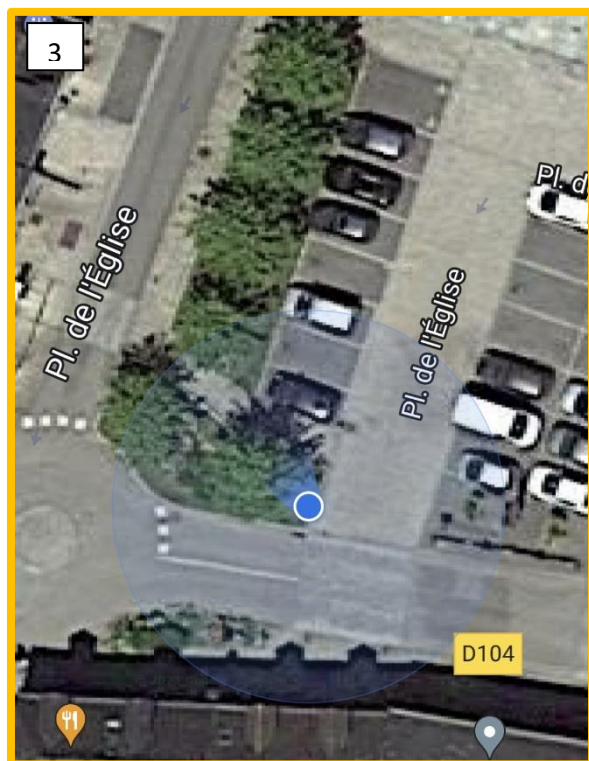


47.674729, -2.564019

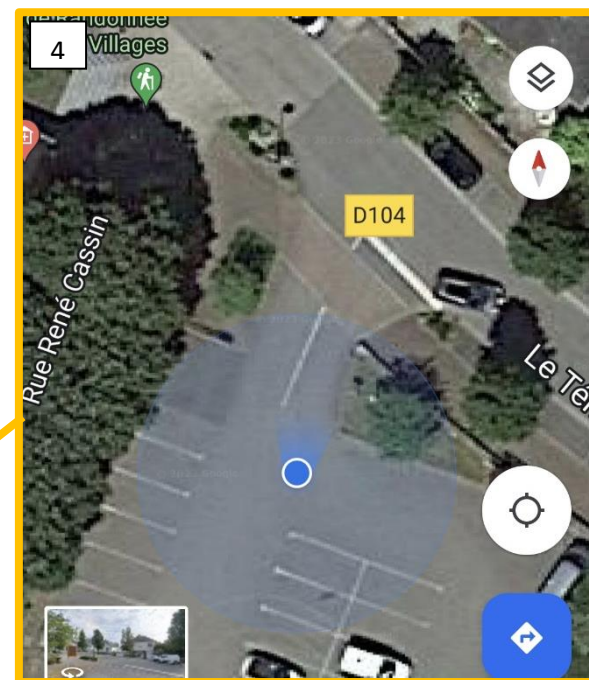
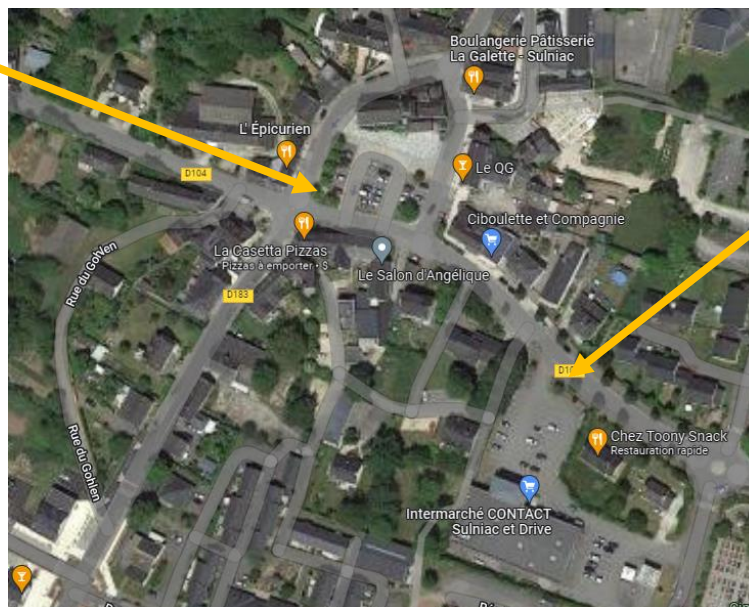
**Implantation de l'avis d'enquête publique :**

3 : Sur le parking de l'église

4 : Sur le parking de l'Intermarché

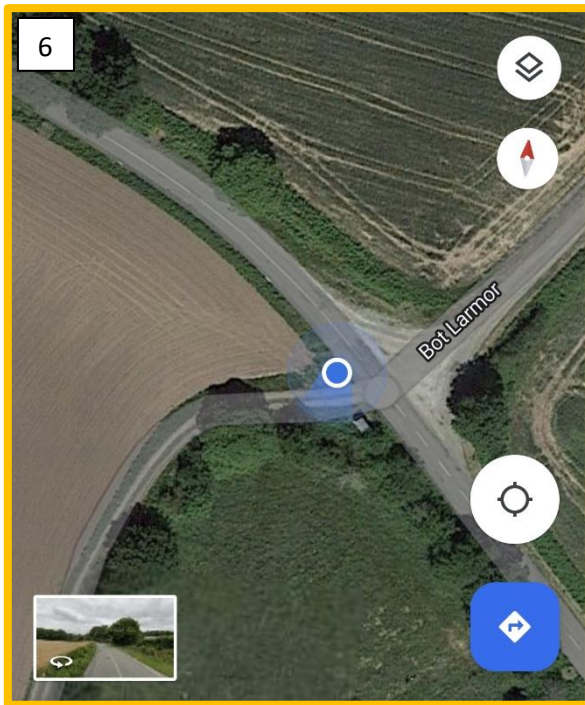


47.675274, -2.570541

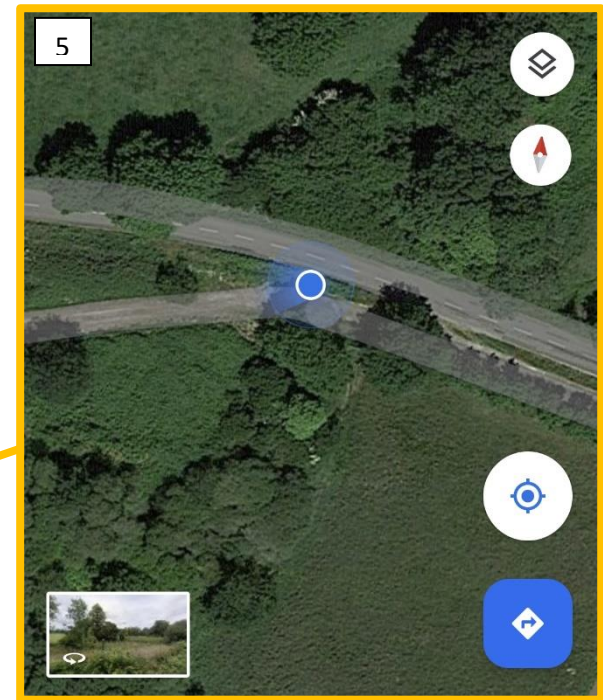
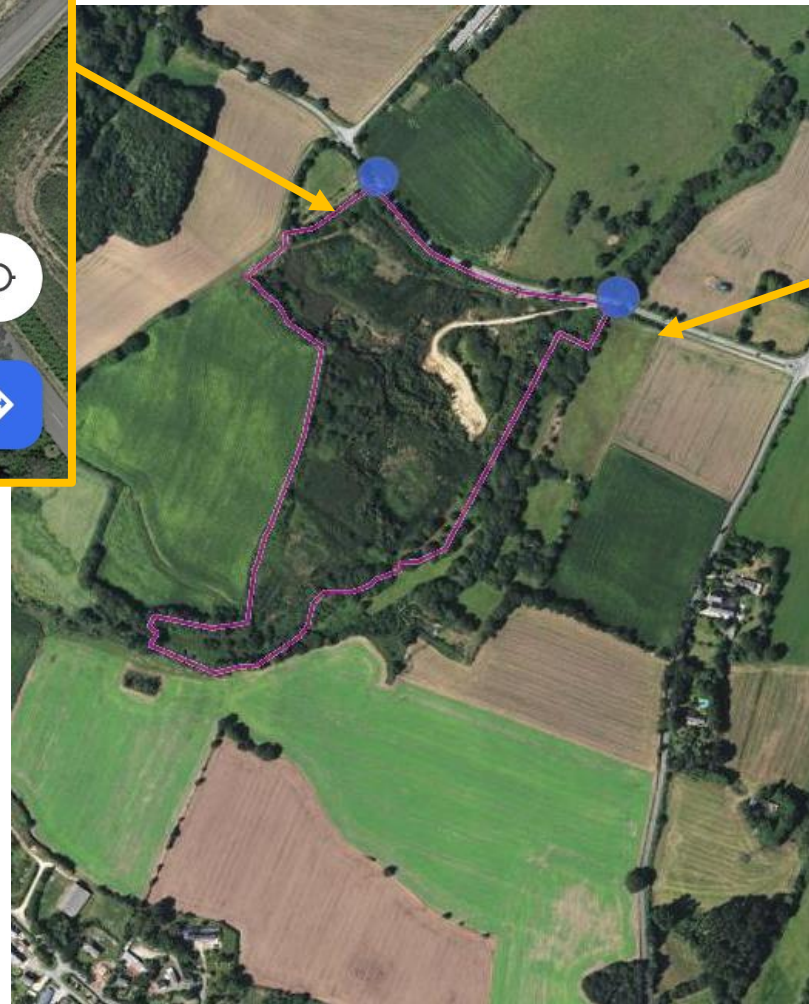


47.675274, -2.570541





47.655475, -2.605184



47.654159, -2.601402

**Implantation de l'avis d'enquête publique :**  
5 : A l'entrée du site  
6 : Du côté Ouest du site